



### Engine Oil and Filter

Engine oil quality is the chief factor affecting engine service life. Change the engine oil as specified in the maintenance schedule (page 52).

#### NOTE:

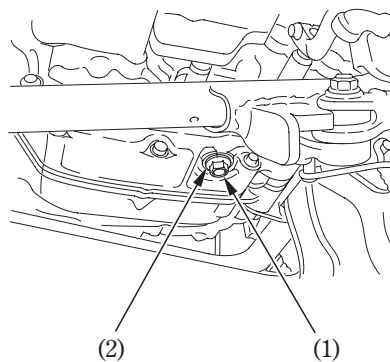
\* Change the engine oil with the engine at normal operating temperature and the motorcycle on its side stand to assure complete and rapid draining.

1. To drain the oil, remove the oil filler cap and oil drain plug (1) and sealing washer (2).

#### **▲WARNING**

\* **A warmed-up engine and the oil in it are hot; be careful not to burn yourself.**

2. After the engine oil has been drained out, hold the motorcycle upright for 10 – 15 seconds to assure complete draining.



(1) Oil drain plug

(2) Sealing washer

