

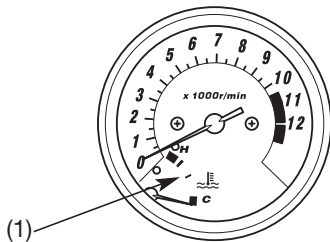
Coolant Temperature Gauge

When the needle begins to move above the “C” (Cold) mark, the engine is warm enough for the motorcycle to be ridden. The normal operating temperature range is within the section between the “H” and “C” marks. If the needle reaches the “H” (Hot) mark, stop the engine and check the reserve tank coolant level.

Read pages 25-26 and do not ride the motorcycle until the problem has been corrected.

NOTICE

Exceeding maximum running temperature may cause serious engine damage.



(1) Coolant temperature gauge