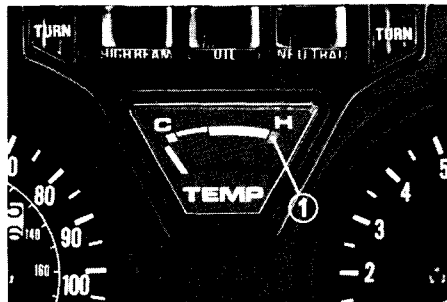


## Coolant Temperature Gauge

Normal operating temperature is within the right wide white band. If the needle enters the red zone while riding, stop the engine and check the reserve tank coolant level. Read pages 25 and 26 and do not ride the motorcycle until the problem has been corrected. During extended idling in very hot weather, the needle may enter the red zone. In this case, cool the engine by riding the motorcycle or rev the engine with the throttle to force air through the radiator, or stop the engine until it cools.

### CAUTION

\* *Exceeding maximum running temperature may cause serious engine damage.*



(1) Red zone