

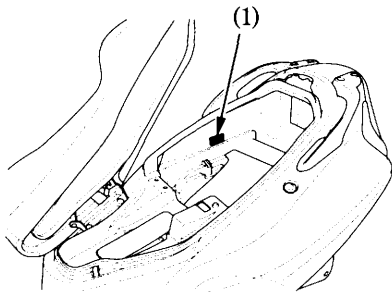
COLOUR LABEL

The colour label (1) is attached to the center compartment. (page 40)

It is helpful when ordering replacement parts. Record the colour and code here for your reference.

COLOUR _____

CODE _____



(1) Colour label

MAINTENANCE PRECAUTIONS

▲WARNING

- * If your scooter is overturned or involved in a collision, inspect control levers and cables, brake hoses, calipers, accessories and other vital parts for damage. Do not ride the scooter if damage impairs safe operation. Have your Honda dealer inspect the major components including frame, suspension, and steering parts for misalignment and damage that you may not be able to detect.
- * Stop the engine and support the scooter securely on a firm, level surface before performing any maintenance.
- * Use new, genuine Honda parts or their equivalent for maintenance and repair. Parts which are not of equivalent quality may impair the safety of your scooter.