

FEATURES (Not required for operation)

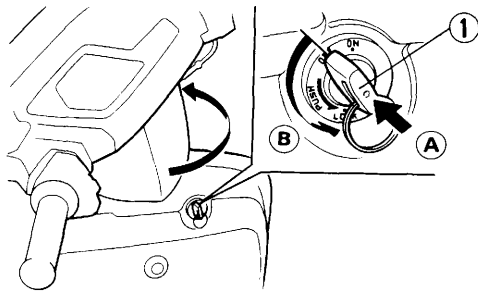
STEERING LOCK

To Lock:

To lock the steering, turn the handlebars all the way to the left, and turn the key (1) to lock while pushing in. Remove the key.

⚠ WARNING

- * **Do not turn the key to LOCK while riding the motorcycle; loss of control will occur.**



(1) Ignition key

(A) Push in

(B) Turn to Lock