

Safety Labels

WARNING

The improper operation of ATVs may result in severe injury or death.

- Read the owner's Manual.
- Follow all warnings and instructions.
- Never use without proper training and instruction.

While riding:

- Never ride too fast for your skills or the conditions.
- Always use proper riding techniques for hills, slopes and rough terrain.
- Use care when changing riding surfaces. ATVs handle differently on different surfaces, such as sand, dirt, or pavement.

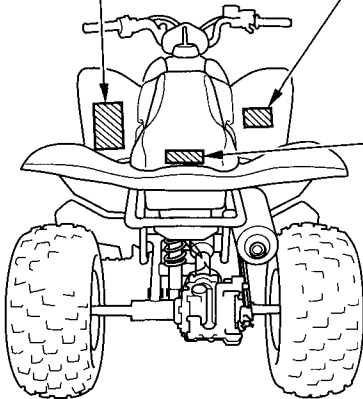
- Never carry a passenger, since it would affect balance and steering and may cause you to lose control.
- Avoid operating on public roads, since a collision can occur with another vehicle.
- Never ride after drinking alcohol or using drugs.
- Always wear a helmet, eye protection, and protective gear.

WARNING

UNDER 16

Operating this ATV if you are under the age of 16 increases your chance of severe injury or death.

NEVER operate this ATV if you are under age 16.



WARNING

NEVER ride as a passenger. Passengers can cause a loss of control, resulting in SEVERE INJURY or DEATH.