

Vehicle Identification

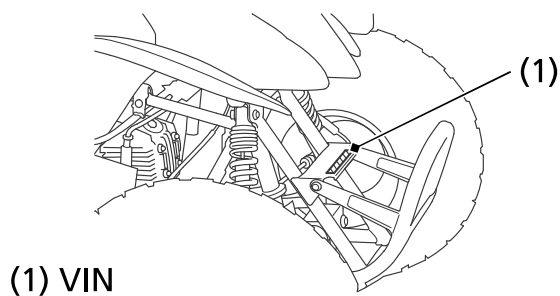
Serial Numbers

The VIN, engine serial number, and key number may be required when ordering replacement parts. Record the numbers here for your reference.

The VIN (1) is stamped on the front of the frame.

VIN _____

FRONT

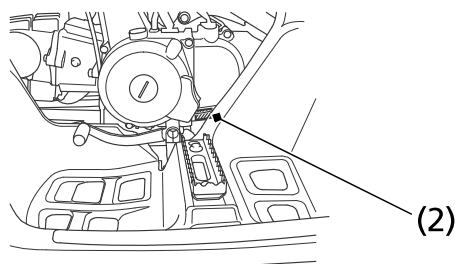


(1) VIN

The engine number (2) is stamped on the lower side of the rear crankcase.

ENGINE No. _____

RIGHT SIDE



(2) engine number

188 Technical Information