

Digital clock (1)

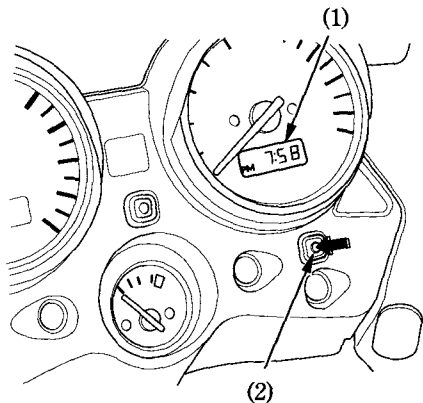
Shows hour and minute. The time is displayed in AM and PM up to 12 o'clock.

To adjust the time, set the clock in the adjust mode by pushing the clock button (2) and holding it for 2 seconds.

As the button is pushed, the display will start blinking, causing the clock to be stopped in the adjust mode.

Push the button until the desired time is displayed.

- The time is advanced by one minute, each time the button is pushed.
- The time is advanced by ten minutes, when the button is pushed and held.



- (1) Digital clock
(2) Clock button