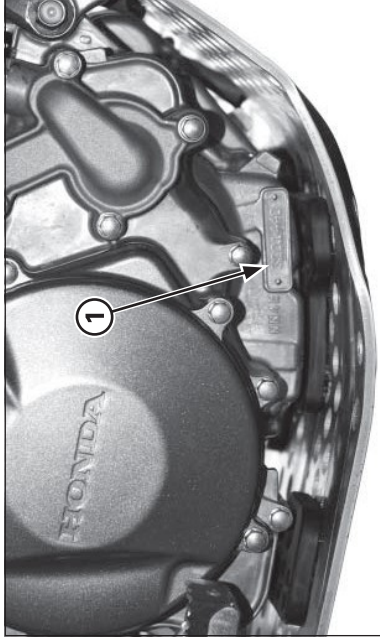


(1) FRAME NUMBER

Serial numbers

The Vehicle Identification Number (VIN) is stamped on the right side of the steering head.



(1) ENGINE NUMBER

The serial number of the engine is stamped on the lower right side of the crankcase.

MODEL	TYPE	FRAME No.	ENGINE No.
MRT 260 F	ED / 2E	*VTDMT04F?FE200001 *	NN4E5201200
MRT 260 F	3E / 4E	*VTDMT04C?FE200001 *	NN4E5201200