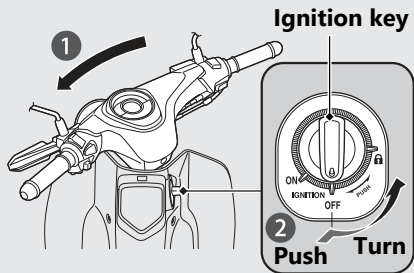


Switches *(Continued)*


Steering Lock

Lock the steering when parking to help prevent theft.

A U-shaped wheel lock or similar device is also recommended.



Locking

- 1 Turn the handlebar all the way to the left.
- 2 Push the ignition switch down, and turn it to the  (Lock) position.
 - ▶ To unlock the ignition switch. ➔ P.34
 - ▶ Jiggle the handlebar if the lock is difficult to engage.
- 3 Lock the ignition switch. ➔ P.35

Unlocking

Push the ignition switch in, and turn it to the OFF position.

- ▶ To unlock the ignition switch. ➔ P.34