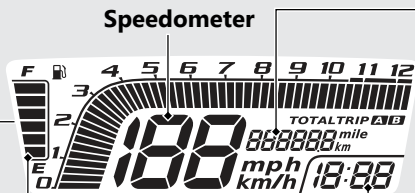


Display Check

When the ignition switch is turned to the ON position, all the mode and digital segments will show, and the tachometer segment progress to maximum scale and then disappear. If any part of these displays does not come on when it should, have your dealer check for problems.



Speedometer

Odometer [TOTAL] & Tripmeter [TRIP A/B]

SEL button switches between the odometer and tripmeters.

- Odometer: Total distance ridden.
- Tripmeter: Distance ridden since tripmeter was reset (press and hold the **SET** button to reset to 0.0 mile/km).

Clock (12-hour display)

Fuel gauge

Remaining fuel when only 1st (E) segment starts flashing:
approximately 0.61 US gal (2.3 L)

If the fuel gauge indicator flashes in a repeat pattern or turns off:  **P.89**

