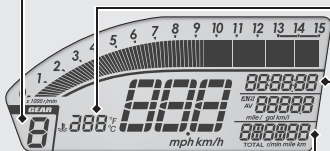


### Gear position indicator

Shows 1st to 6th gear position.



### Odometer [TOTAL]/Numerical tachometer display

SET button switches between odometer & numerical tachometer display.

- Odometer: Total distance ridden.
- Numerical tachometer display: Shows engine revolutions per minutes digit.

### Coolant temperature gauge ( )

Display range: 95 °F (35 °C) to 270 °F (132 °C)

- Below 94 °F (34 °C): “— —” displays
  - Between 251 °F (122 °C) and 269 °F (131 °C):
    - High coolant temperature indicator lights
    - Coolant temperature digit flash
  - Above 270°F (132 °C):
    - High coolant temperature indicator lights
    - “270” (°F) / “132” (°C) flashes
- ▶ Even if the engine coolant temperature is low, the cooling fan may start running when you rev up the engine. This is normal.

### Clock (12-hour display) / Lap timer

To set the clock: ➡ P.23

Lap timer ➡ P.32