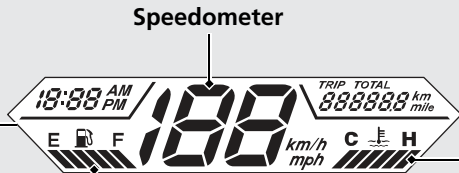



Display Check

When the ignition switch is turned on, all the mode and digital segments will show. If any part of these displays does not come on when it should, have your dealer check for problems.



Speedometer

Coolant temperature gauge ()

When the coolant is over specified temperature, the segment H flashes.

If it comes on while riding:  **P.77**

Fuel gauge

Remaining fuel when only 1st (E) segment starts flashing:
approximately 0.37 US gal (1.4 liters)

