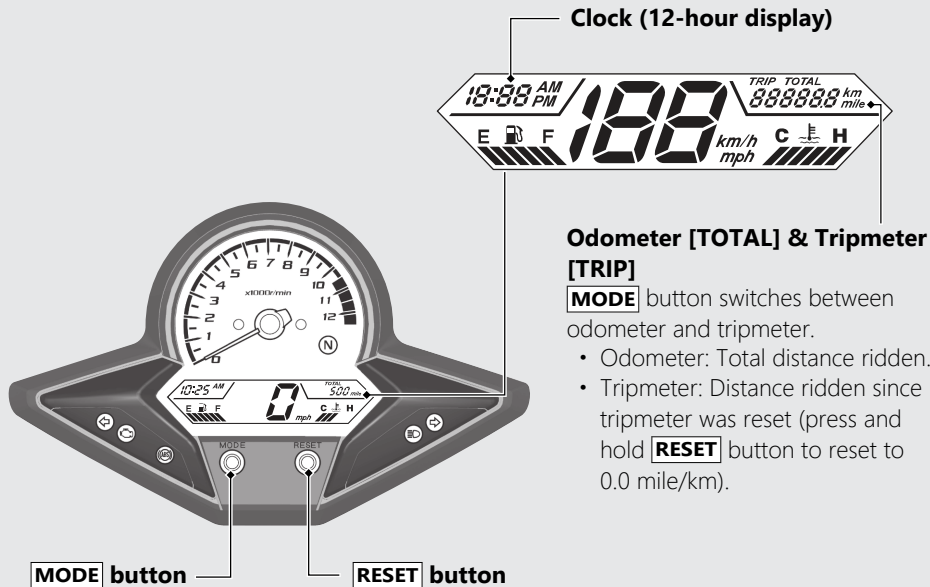


## Instruments (Continued)



Clock (12-hour display)

**Odometer [TOTAL] & Tripmeter [TRIP]**

**MODE** button switches between odometer and tripmeter.

- Odometer: Total distance ridden.
- Tripmeter: Distance ridden since tripmeter was reset (press and hold **RESET** button to reset to 0.0 mile/km).