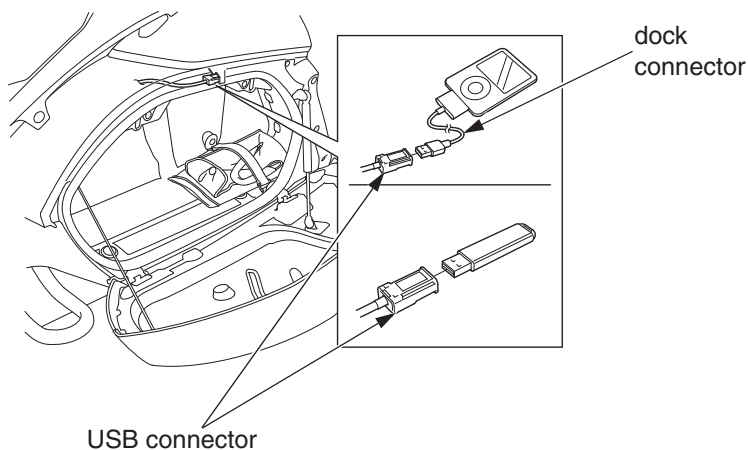


iPod® /USB Flash Drive

USB Cable



To connect

1. Open the left saddlebag (see page 47).
2. Unclip the USB connector.
3. Connect your iPod® with dock connector or the USB flash drive to the USB connector.

To disconnect

You can disconnect the iPod®/USB flash drive at any time. Make sure to follow the iPod®'s instructions on how to disconnect the dock connector from the USB cable.

When you disconnect the iPod®/USB flash drive, the USB indicator will disappear.