

Idling Stop System *(Continued)*

Activating the Idling Stop System

The Idling Stop system becomes ready to stop the engine and the Idling Stop indicator comes on when the following conditions are satisfied with the Idling Stop system on.

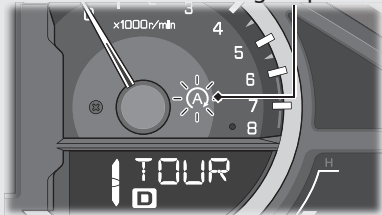
- Engine is sufficiently warmed up
- Motorcycle has been ridden at a speed of over 6 mph (10 km/h).

Idling Stop Indicator Does Not Come On: ➡ P.182

Stopping the engine by the Idling Stop System

The engine stops and the Idling Stop indicator flashes after you close the throttle completely and stop the vehicle while the Idling Stop system is on.

Idling Stop indicator



- ▶ While the engine is stopped by the Idling Stop system, if you press the start/Idling Stop button, the Idling Stop system is deactivated and the engine will restart.
- ▶ The following conditions occur while the engine is stopped by the Idling Stop system, the engine will be restarted.
 - Hill Start Assist (HSA) is activated.
 - Transmission is shifted in Neutral (N switch is pressed).
 - Motorcycle moves at about 3 mph (5 km/h) or more.
 - Battery is discharged more than specified.
- ▶ In the following conditions, the engine will not stop by the Idling Stop system.
 - Rider is not sitting astride the motorcycle.
 - Transmission is in Neutral (N).
 - Battery is weak or temperature of battery is low.
 - Hill Start Assist (HSA) is operated.

Safety Precautions for the Idling Stop System

Do not go away from the motorcycle while the Idling Stop indicator is flashing. When you go away from the motorcycle, always turn the ignition switch to OFF.

- ▶ While the engine is stopped by the Idling Stop system, do not press against the seat with your hands or body, and do not put a load on the seat other than that of the rider sitting astride the motorcycle. Even if the rider does not get on the motorcycle, the engine will restart unexpectedly when the throttle is opened or when the battery becomes weak with a load on the seat.

Engine is Not Stopped by the Idling Stop System While the Idling Stop Indicator is On: ➡ P.182

NOTICE

Stopping by the Idling Stop system for a long time may cause battery discharge.