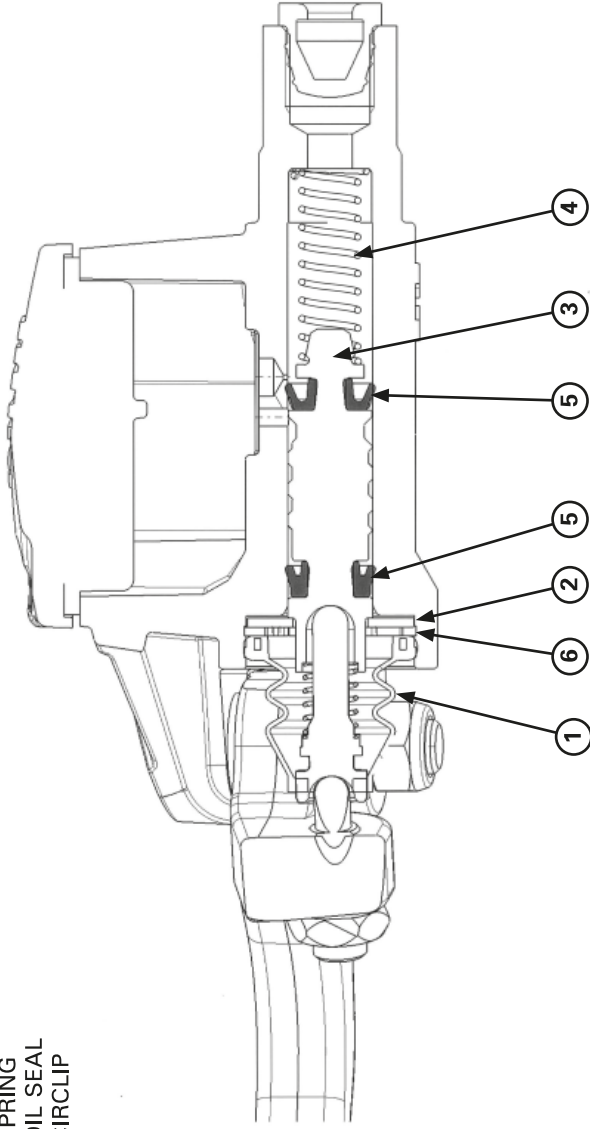


- (1) BOOT
- (2) SNAP RING
- (3) PISTON ASSEMBLY
- (4) SPRING
- (5) OIL SEAL
- (6) CIRCLIP



**Disassembly/Assembly**

**NOTICE**

*Keep the master cylinder piston, oil seals, spring and snap ring as a set; don't substitute individual parts. When installing the oil seals, do not allow the lips to turn inside out and be certain the snap ring is firmly seating in the groove.*

Remove the snap ring and disassemble the master cylinder.

**Inspection**

Check the following items (page 2-5):

- Master cylinder and piston for scoring, scratches or other damage
- Master piston O.D. and master cylinder I.D.

**Installation**

Installation is in the reverse order of removal.

**Torque:**

**Brake hose oil bolt: 14 N•m (1.4 kgf•m, 10.3 lbf•ft)**  
**Master cylinder holder bolt: 5.5 N•m (0.5 kgf•m, 4.1 lbf•ft)**

Bleed the air from the clutch system.