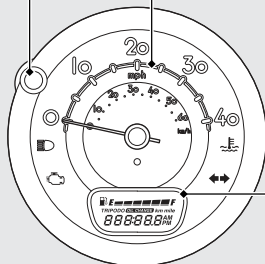


Instruments

MODE switch



Speedometer

Shows riding speed in miles per hour (mph) and kilometer per hour (km/h).

Display Check

When the ignition switch is turned to the ON position, the speedometer needle swings to the maximum scale on the dial once, all the mode and digital segments will show.

If any part of these displays does not come on when it should, have your dealer check for problems.