

Vehicle Identification

Serial Numbers

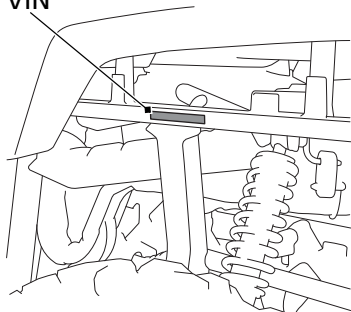
The VIN, engine serial number, and key number may be required when ordering replacement parts. You may record these numbers in the Quick Reference section at the rear of this manual.

The VIN is stamped on the left side of the frame, located under the cargo carrier.

The engine number is stamped on the upper side of the rear crankcase.

LEFT SIDE

VIN



LEFT SIDE

engine number

