

# If the Transmission Is Not Functioning Properly

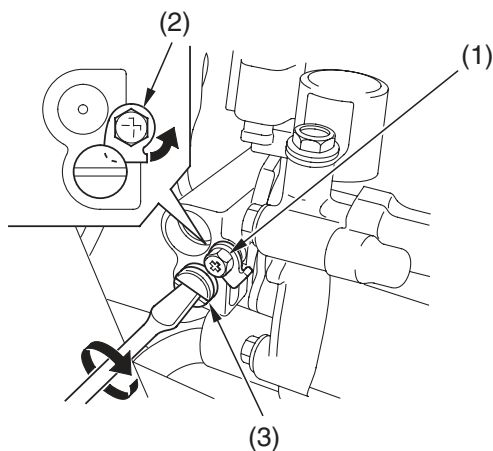
---

If the gear position indicator doesn't show “—” or is not blinking and the ATV doesn't move:

If your ATV won't move, it is possible the transmission is locked. Use the following procedure to unlock the transmission.

1. Make sure the transmission is in neutral.
2. Apply the parking brake.
3. Turn the ignition switch to the OFF ( O ) position.
4. Remove the seat (page 106 ) and left side cover (page 114 ).
5. Loosen the screw ( 1 ) and release the lock plate ( 2 ).
6. Turn the emergency valve ( 3 ) all the way in.
7. Restart the engine, drive the vehicle to a location where it can be loaded and transported to your dealer.

## LEFT SIDE



- (1) screw  
(2) lock plate

(3) emergency valve