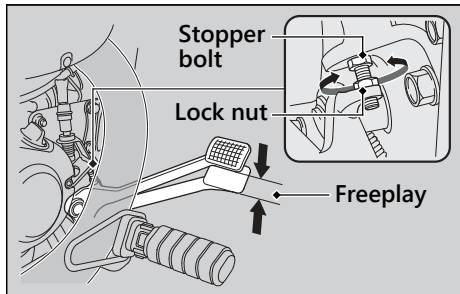


Adjusting the Rear Brake Pedal Height

The stopper bolt is provided to allow adjustment of the pedal height.

1. Place your motorcycle on its side stand on a firm, level surface.
2. Loosen the lock nut and turn the stopper bolt.
3. Tighten the lock nut and check the freeplay.



Inspecting the Rear Brake Pedal Freeplay

1. Place your motorcycle on its side stand on a firm, level surface.
2. Measure the distance of the rear brake pedal before the starts to take hold.

Freeplay at the tip of the brake pedal:
13/16 - 1 3/16 in (20 - 30 mm)

Make sure the brake rod, brake arm, spring and fastener are in good condition.