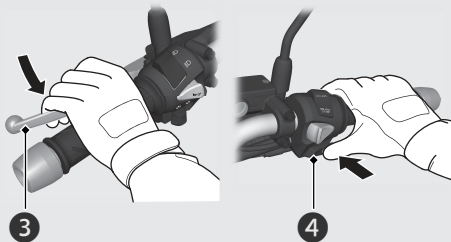


- 3 Squeeze the rear brake lever.
 - ▶ The starter motor will only work when the rear brake lever is squeezed and the side stand is up.
- 4 Press the start button with the throttle completely closed. Release the start button as soon as the engine starts.



If you cannot start the engine:

- 1 Place the scooter on its centre stand and squeeze the rear brake lever.
- 2 With the throttle slightly open (about 3 mm, without freeplay), press the start button.

About 3 mm, without freeplay

