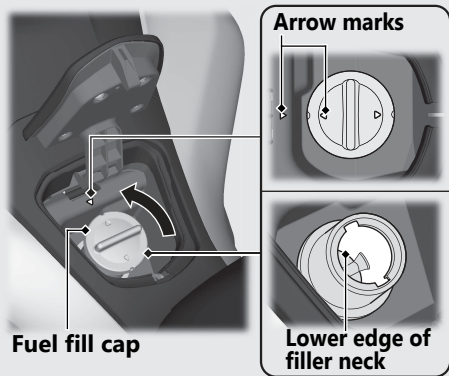


## Refuelling *(Continued)*

- Turn the fuel fill cap counterclockwise and remove the fuel fill cap.



Do not fill with fuel above the lower edge of the filler neck.

## Closing the Fuel Fill Cap

- Install and tighten the fuel fill cap firmly by turning it clockwise.
  - Make sure that the arrow marks on the fuel fill cap and fuel tank are aligned.
- Close the fuel lid until it locks.
  - Make sure that the fuel lid is closed securely.

## **⚠ WARNING**

Petrol is highly flammable and explosive. You can be burned or seriously injured when handling fuel.

- Stop the engine, and keep heat, sparks, and flame away.
- Handle fuel only outdoors.
- Wipe up spills immediately.