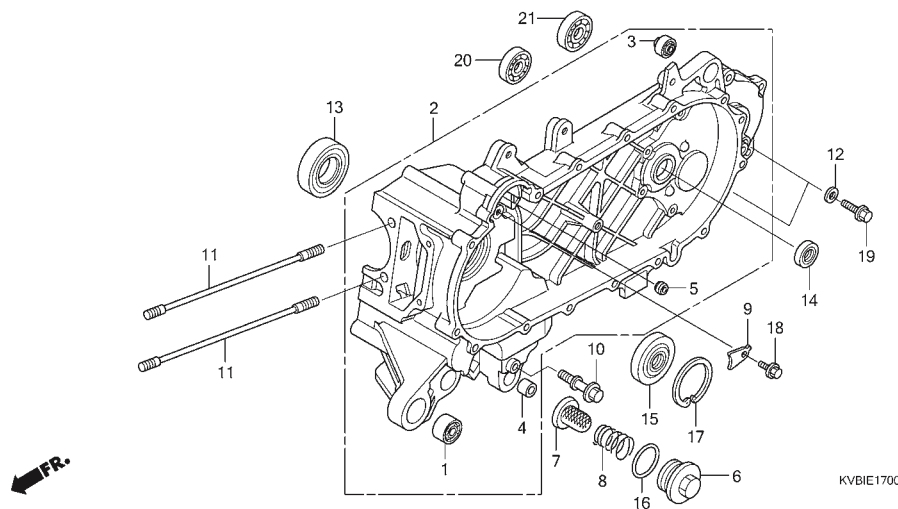


## E - 17

### Left Crankcase



Service item	F.R.T.	No.	Part Number	Description	QTY	Notes
2 CRANKCASE :LEFT .....	4.6	1	11103-KVB-901	BUSH, ENGINE HANGER RUBBER	1	
.INCLUDES: Engine removal and installation		2	11200-KVB-901	CRANKCASE COMP., L.	1	
CRANKCASE :BOTH .....	4.7	3	11203-KVB-901	BUSH, RR. CUSHION UNDER RUBBER	1	
.INCLUDES: Engine removal and installation		4	11205-GBC-300	BUSH, MAINSTAND	1	
		5	11205-GW3-980	BUSH, 8X12X6	1	
		6	12361-035-000	CAP, TAPPET ADJUSTING HOLE	1	
7 (6,8,16) SCREEN, OIL FILTER .....	0.2	7	15421-107-000	SCREEN, OIL FILTER	1	
13 BEARING, CRANKSHAFT :LEFT .....	3.8		15421-KPL-900	SCREEN, OIL FILTER	1	
.INCLUDES: Engine removal and installation		8	15426-KVB-900	SPRING, OIL FILTER SCREEN	1	
14 OIL SEAL, DRIVESHAFT .....	1.1	9	23531-MG2-790	PLATE, BEARING SETTING	1	
15 OIL SEAL, CRANKSHAFT :LEFT .....	3.8	10	90016-GAM-690	BOLT, SPECIAL, 6X27	1	
.INCLUDES: Engine removal and installation		11	90032-KVB-900	BOLT B, STUD, 7X198.5	2	
OIL SEAL, CRANKSHAFT :BOTH .....	3.9	12	90474-333-000	WASHER, SEALING, 8MM	2	
.INCLUDES: Engine removal and installation		13	91002-KVB-930	BEARING, RADIAL BALL SPECIAL,	1	
		14	91202-KJ9-003	OIL SEAL, 20X32X6	1	
		15	91202-KVB-901	OIL SEAL, 20.8X52X6X7.5	1	
20 BEARING, COUNTERSHAFT :LEFT..	1.0	16	91302-001-020	O-RING, 30.8MM	1	
BEARING, COUNTERSHAFT :BOTH.	1.2	17	94520-52150	CIRCLIP, INTERNAL, 52MM	1	
21 BEARING, FINAL GEAR SHAFT		18	95701-06016-00	BOLT, FLANGE, 6X16	1	
:LEFT .....	1.0	19	95701-08012-00	BOLT, FLANGE, 8X12	2	
BEARING, FINAL GEAR SHAFT		20	96100-63010-00	BEARING, RADIAL BALL, 6301	1	
:BOTH .....	1.2	21	96100-63020-00	BEARING, RADIAL BALL, 6302	1	