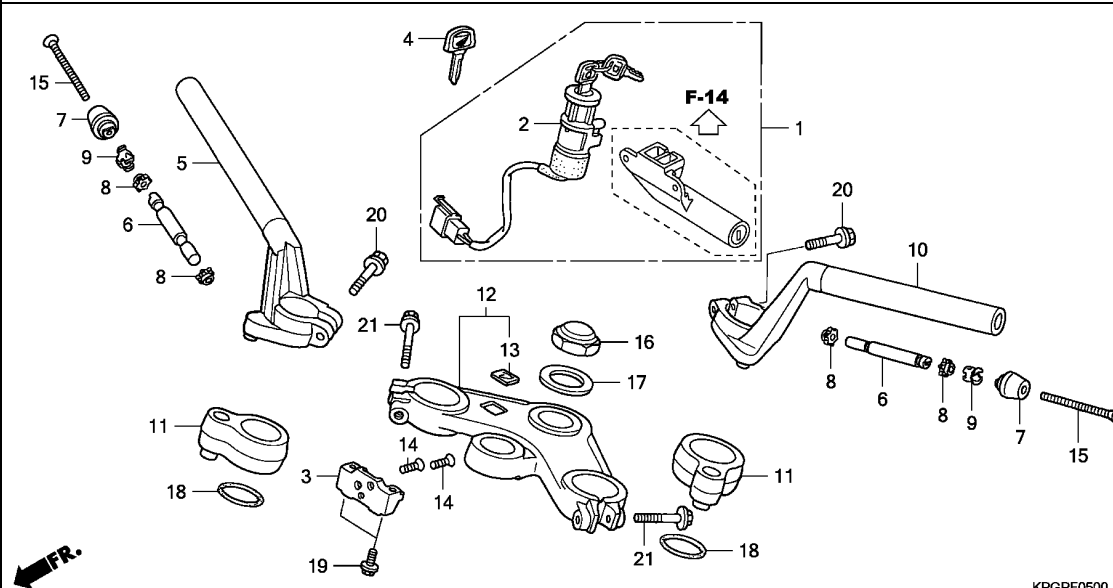


# F-5

# HANDLE PIPE/TOP BRIDGE

# F 5



Ref. No.	L.O.N.	(Relative ref. Number) Description	F.R.T.
1	6151A1	KEY SET .....	0.8
2	615145	SWITCH, COMBINATION & LOCK ...	0.4
5	8101B1	PIPE, STEERING HANDLE :RIGHT ..	0.3
	8101B2	PIPE, STEERING HANDLE :BOTH ..	0.7
6	8101D6	WEIGHT B, HANDLE :LEFT .....	0.2
	8101D7	WEIGHT B, HANDLE :RIGHT .....	0.2
	8101D8	WEIGHT B, HANDLE :BOTH .....	0.4
10	8101B0	PIPE, STEERING HANDLE :LEFT ..	0.4
	8101B2	PIPE, STEERING HANDLE :BOTH ..	0.7
12	510110	BRIDGE, FORK TOP .....	0.5

Ref. No.	Part No.	Description	Reqd. QTY ZN125M 9	Serial No.	Parts catalogue code
1	35010-KPG-T00	KEY SET .....	1		
2	35100-KPG-T01	SWITCH ASSY., COMBINATION & LOCK	1		
3	35105-KPG-960	STAY, COMBINATION SWITCH .....	1		
4	35121-KV8-680	KEY, BLANK (TYPE 1) (KEY NO. AXX / BXX) (1)			
	35122-KV8-680	KEY, BLANK (TYPE 2) (KEY NO. CXX / DXX) (1)			
5	53100-KPG-T00	PIPE, R. STEERING HANDLE .....	1		
6	53104-KPG-T00	WEIGHT B, STEERING HANDLE ...	2		
7	53105-KPG-T00	WEIGHT A, STEERING HANDLE ...	2		
8	53106-KR3-000	RUBBER A, HANDLE WEIGHT .....	4		
9	53108-KR3-770	RING, HANDLE WEIGHT SNAP .....	2		
10	53150-KPG-T00	PIPE, L. STEERING HANDLE .....	1		
11	53235-KPG-900	COLLAR, TOP BRIDGE .....	2		
12	53300-KPG-900	BRIDGE COMP., FORK TOP .....	1		
13	86150-KPG-901	EMBLEM, PRODUCT (MARUI) .....	1		
14	90164-028-000	SCREW, U-LOCK FLAT, 6X12 .....	2		
15	90191-KPH-880	SCREW, OVAL, 6X70 .....	2		
16	90305-KGH-900	NUT, STEERING STEM .....	1		
17	90503-KGH-900	WASHER, STEERING STEM .....	1		
18	91315-KGH-900	O-RING, 26X1.0 .....	2		
19	95701-06012-07	BOLT, FLANGE, 6X12 .....	2		
20	95701-08032-07	BOLT, FLANGE, 8X32 .....	2		
21	95701-08045-07	BOLT, FLANGE, 8X45 .....	2		