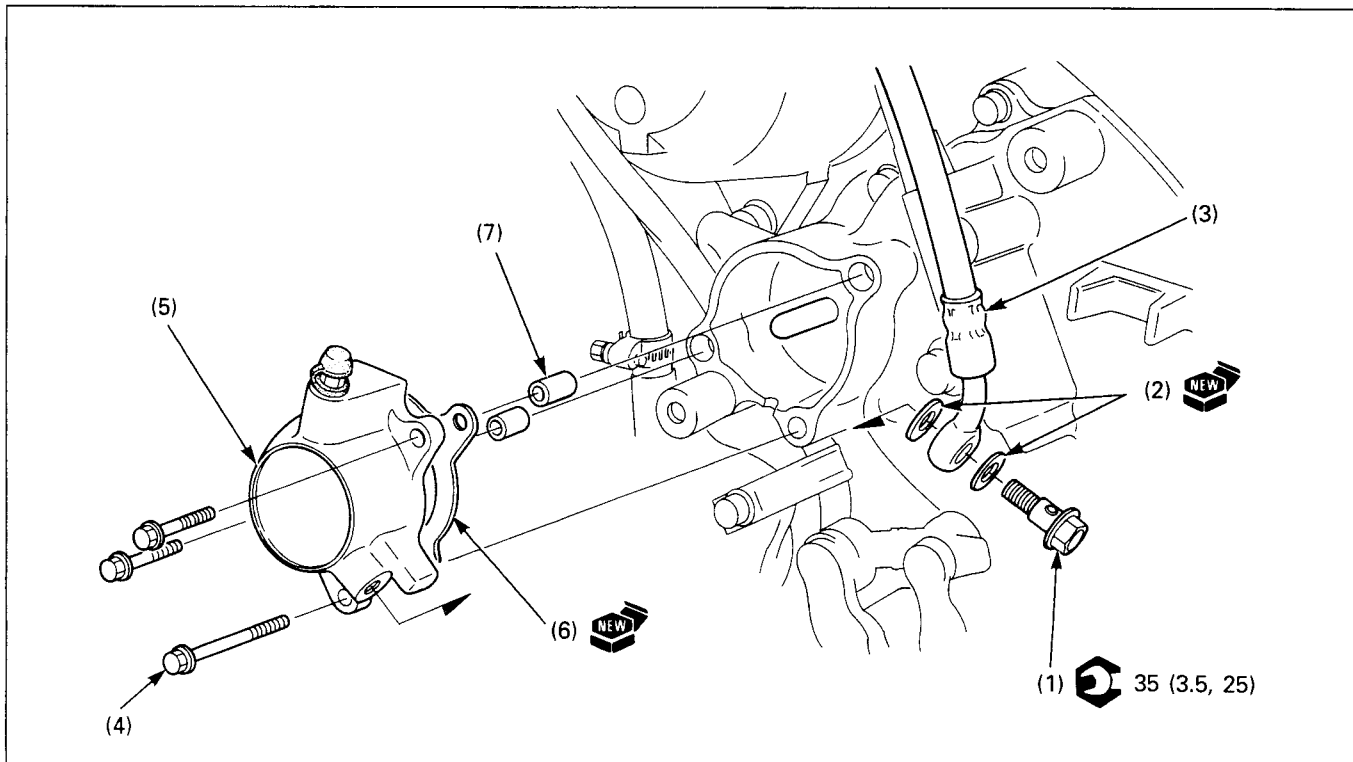


Clutch Slave Cylinder Removal/Installation



Requisite Service

- Clutch fluid draining/refilling
- Clutch system air bleeding
- Lower fairing removal/installation (page 2-6)

Procedure		O'ty	Remarks
Removal Order			Installation is in the reverse order of removal.
(1)	Oil bolt	1	
(2)	Sealing washer	2	
(3)	Oil hose	1	
(4)	Bolt	3	
(5)	Slave cylinder assembly	1	
(6)	Gasket	1	
(7)	Dowel pin	2	