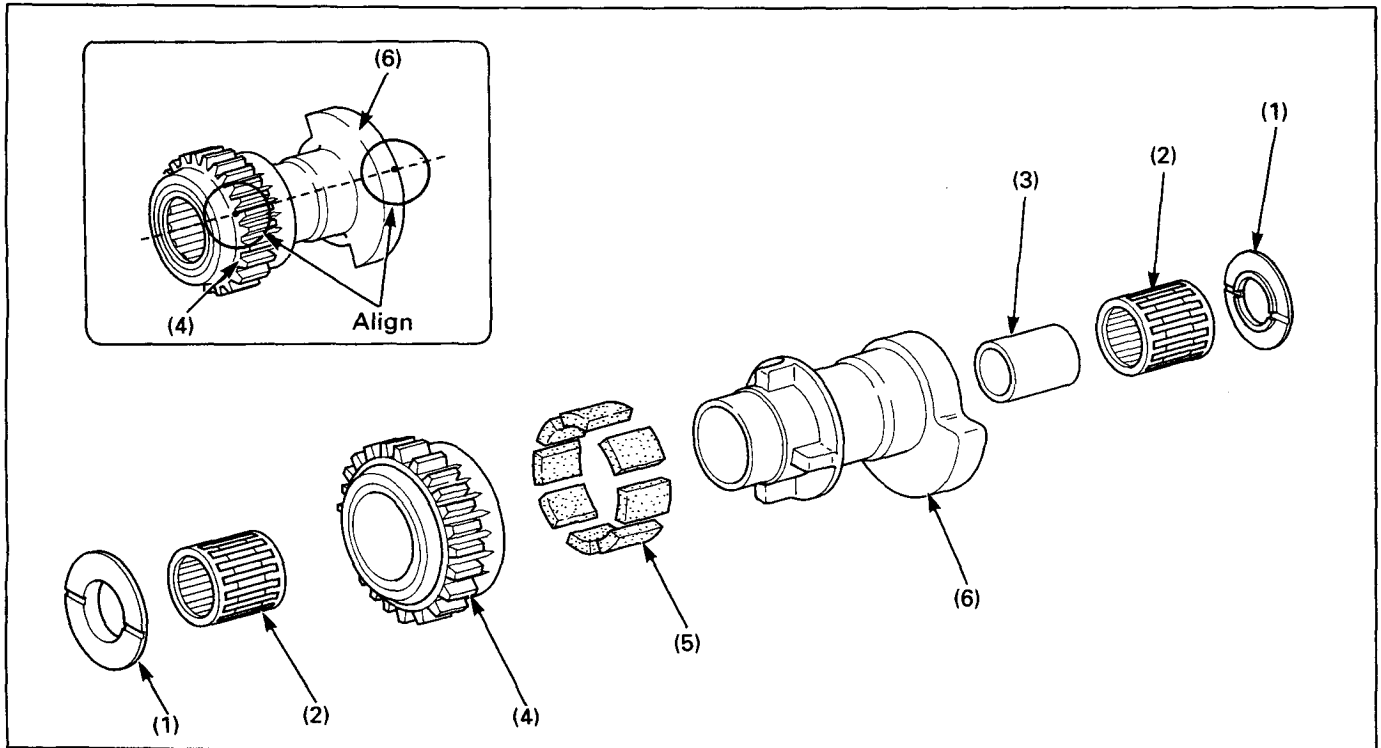


Balancer Disassembly/Assembly



NOTE

- Replace the weight, shaft and needle bearings as a set.

Requisite Service

- Balancer removal/installation (page 10-2)

Procedure		Q'ty	Remarks
	Disassembly Order		Assembly is in the reverse order of disassembly.
(1)	Washer	2	
(2)	Needle bearing	2	
(3)	Collar	1	
(4)	Balancer gear	1	NOTE
			• Assemble the balancer weight aligning the index mark on the weight with the punch mark on the gear.
(5)	Damper	8	
(6)	Weight	1	