

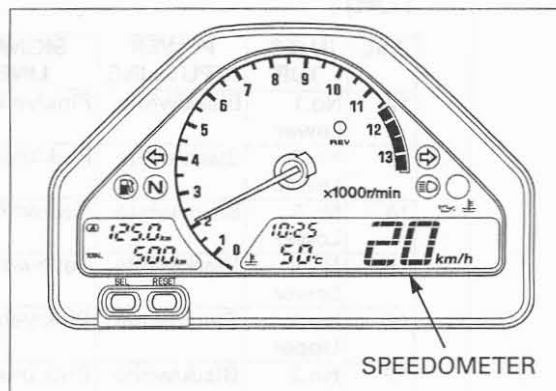
2. Combination Meter Inspection

Check for operation of speedometer.

Does the speedometer operate normally?

YES – Open or short circuit in the Brown/white wire

NO – GO TO STEP 3.



3. VS Sensor Input Voltage Inspection

Turn the ignition switch OFF.
Disconnect the VS sensor 3P (Natural) connector.

Turn the ignition switch ON and engine stop switch "O".

Measure the voltage at the wire harness side.

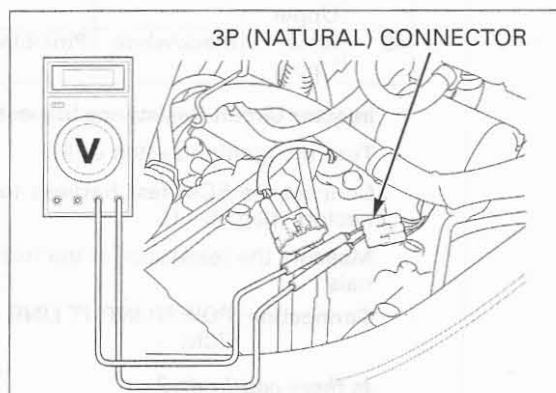
Connection: Pink (+) – Green/black (-)

Is there battery voltage?

YES – GO TO STEP 4.

NO –

- Open circuit in the Pink wire
- Open circuit in the Green or Green/black wire



4. VS Sensor Signal Line Short Circuit Inspection

Turn the ignition switch OFF.

Check for continuity between the test harness and the ground.

Connection: B25 – ground

Is there continuity?

YES – Short circuit in the Pink wire

NO – Inspect the VS sensor (page 20-11)

