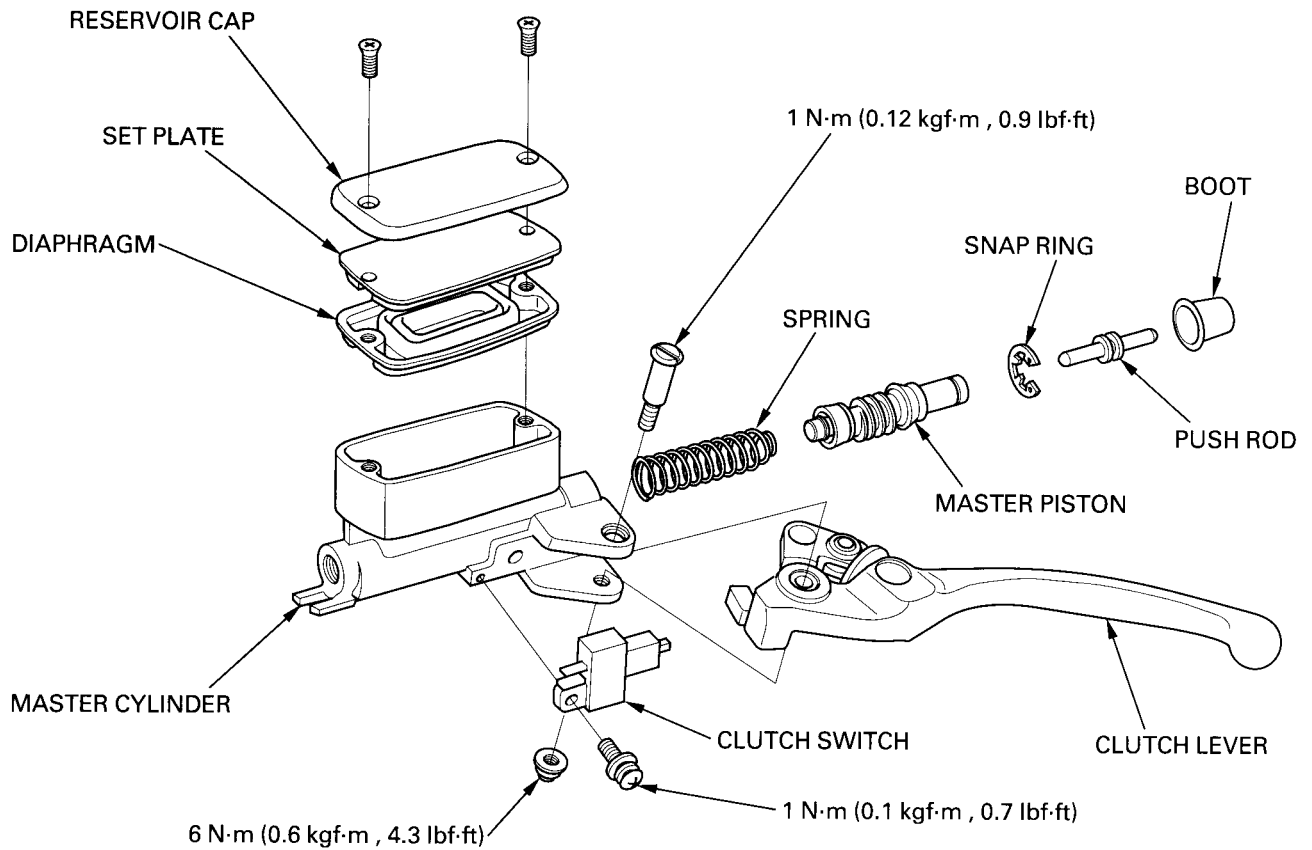


ASSEMBLY



CAUTION:

Keep the piston, cups, spring, snap ring and boot as a set; do not substitute individual parts.

Coat all parts with clean brake fluid before assembly.
 Dip the piston in brake fluid.
 Install the spring onto the master cylinder.
 Install the piston assembly into the master cylinder.

CAUTION:

When installing the cups, do not allow the lips to turn inside out.

Install the snap ring using the special tool.

CAUTION:

Be certain the snap ring is firmly seated in the groove.

TOOL:

Snap ring pliers

07914-SA50001 or
 07914-3230001

